

BIZINSIGHT™ 5.0.34.1

Release Notes

BizInsight 5.0.34.1

Build 34.1

January 30, 2013

Copyright Notice

BizNet Software makes no representations or warranties with respect to the contents of this document and specifically disclaims any implied warranties of merchantability or fitness for any particular purpose.

We welcome user comments and reserve the right to revise this publication and to make improvements or changes to the products and programs described in this publication at any time without notice.

Mailing Address:

BizNet Software, Inc.
14785 Preston Rd.
Suite 800
Dallas, TX 75254

Phone:

1-888-803-5227

Web Site:

<http://www.biznetsoftware.com>

© Copyright 2013 by BizNet Software®, Inc. All rights reserved.

Printed in the United States of America

No part of this publication may be reproduced in any form without the prior written consent of BizNet Software, Inc.

Trademarks

BizInsight is a registered trademark of BizNet Software, Inc.

Windows and Microsoft Excel are registered trademarks of Microsoft Corp.

All other trademarks are acknowledged.

1. BizInsight - Feature

1.1. Major Feature

1.1.1. BizInsight Office 2010 64-bit Support



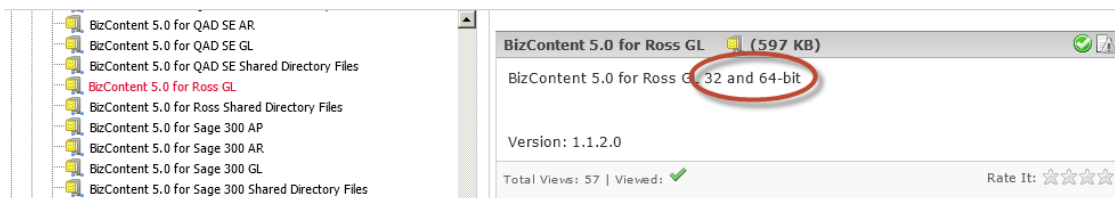
The 64-bit version of Excel 2010 is not constrained to 2 GB of RAM like 32-bit applications. Therefore, 64-bit Excel 2010 enables users to create much larger workbooks. 64-bit Windows enables a larger addressable memory capacity, and 64-bit Excel is designed to take advantage of that capacity. As more RAM is added to the computer, Excel uses that additional memory, allows larger and larger workbooks, and scales with the amount of RAM available.

In our laboratory testing, 32-bit Excel utilizes 1.1 to 1.4 GB RAM before reaching the maximum memory boundary. As a solution, BizNet Software realizes 64-bit is becoming the standard for systems that range from servers to desktop computers and provides users to work with much larger data sets than they could previously, and to analyze and solve large computational problems.

Windows Memory Limits

<http://msdn.microsoft.com/en-us/library/aa366778.aspx>

IMPORTANT: In order to use the 64-bit version of BizInsight, the BizContent pack client files must also be 64-bit capable. At the time of this release, not all BizContent packs have been updated with 64-bit client files. To determine if your BizContent pack has 64-bit support, log into the BizNet Software portal, locate the download file for your BizContent pack and view the description. If 64-bit support is provided, it will be noted, for example:



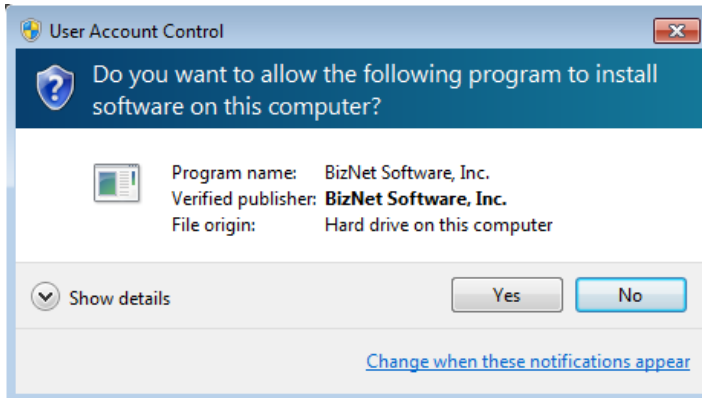
If 64-bit is not indicated for your content pack and you require them, please open a support issue (<http://www.biznetsoftware.com/support/support-issue/>) to request 64-bit files.

2. BizInsight - Enhancement

2.1. Major Enhancements

2.1.1. BizNet Installation with a Digitally Signed Certificate

BizNet provides digital assurance to our users that the installation or the code within the application has not been tampered with or altered since publication. Users are presented with a digital certificate during installation.



2.1.2. 255 Character Drill-Down Length Expansion

BizInsight drill-down feature is limited by the length of the value passed in a parameter. When the parameter value length is beyond 255 characters and a user selects to drill-down, the value length is truncated and disrupts the drill-down menu process. The newest enhancement has no length restrictions in the value when evaluated in Excel. The values are not truncated and each parameter is evaluated independently. XMLFAST feature is supported in the enhancement.

The new drill-down that supports more than 255 characters requires pre-setup and limitations. Administrators must enable the feature in the app.config file by changing the default setting from “False” to “True”. A limitation is BizProperty values are limited to 255 characters. If BizProperty is used inside a complex range, the value referenced in SetBizProperty cannot exceed 255 characters or the drill-down function will not work. See [Known Issues](#).

Example: App config script. See [Appendix](#)

```
<setting name="ShowLargeFilters" serializeAs="string">  
<value>False</value>
```

1. Default drill-down example: More than 255 character length parameter set as a complex range.

```
(((Segment1 >= 100 AND Segment1 <= 100) OR (Segment1 >= 110 AND Segment1 <= 110) OR  
(Segment1 >= 331 AND Segment1 <= 331) OR (Segment1 >= 105 AND Segment1 <= 105) OR  
(Segment1 >= 110 AND Segment1 <= 110) OR (Segment1 >= 110 AND Segment1 <= 110) OR  
(Segment1 >= 110 AND Segment1 <= 110) OR (Segment1 >= 110 AND Segment1 <= 110) OR  
(Segment1 >= 110 AND Segment1 <= 110)))
```


- When “ShowLargeFilters” in the app.config value is set to “TRUE”, the function drill-down on more than 255 characters is enabled, drill-down data is returned, and the feature inserts parameter values starting on A4.

	A	B	C	D	E	F	G
1	DrillDown						
2							
3							
4	CompanyID=(251,256,225) FiscYear=2009 FiscPer=12 [((Segment1 >=						
5	GLAcctKey	FiscYear	FiscPer	FiscQTR	BegBal	CreditAmt	DebitAmt
6	152983	2009	12	4	0	0	50000

2.1.3. International Compatibility Requires Microsoft .NET 4.0



Microsoft .NET 4.0 provides the System.Globalization namespace containing classes that define culture-related information, including language, country/region, calendars in use, format patterns for dates, currency, and numbers, and sort order for strings. These classes are useful for writing globalized (internationalized) applications.

2.2. Minor Enhancements

2.2.1. BizProperty Offline Support

Users creating business reports with BizProperty functions can select the OFFLINE mode to create a series of BizProperties without committing to the database until the report is ready. When the report is ready, select ONLINE mode and refresh the functions to commit the new values.

- Open workbook with automatic calculation turned “ON”.
- Click “OFFLINE” button.
- Set BizProperty value in the workbook. Returns #OFFLINE in the value.
- Get BizProperty returns #OFFLINE in the value
- Click “ONLINE” button.
- Commit Set BizProperty functions to write to the database.
- Get BizProperty and the Set BizProperty value is returned.

SetBizProperty		
	Value	Name
#OFFLINE	[(Segmen1 >= 100 AND Segment1 <= 100)]	Test1
#OFFLINE	[(Segmen1 >= 200 AND Segment1 <= 200)]	Test2
GetBizProperty		
	Value	Name
	#OFFLINE	test1
	#OFFLINE	test2

2.2.2. Install Event Sources to Allow Windows Event Logging

On Windows 7 and Windows Vista, Event logging is problematic when User Account Control is enabled. This is due to a documented operating system security restriction in event source creation.

This problem is described here:

<http://msdn.microsoft.com/en-us/library/2awhba7a.aspx>

To create an event source in Windows Vista and later or Windows Server 2003, you must have administrative privileges.

The reason for this requirement is that all event logs, including security, must be searched to determine whether the event source is unique. Starting with Windows Vista, users do not have permission to access the security log; therefore, a SecurityException is thrown.

In Windows Vista and later, User Account Control (UAC) determines the privileges of a user. If you are a member of the Built-in Administrators group, you are assigned two run-time access tokens: a standard user access token and an administrator access token. By default, you are in the standard user role. To execute the code that accesses the security log, you must first elevate your privileges from standard user to administrator. You can do this when you start an application by right-clicking the application icon and indicating that you want to run as an administrator.

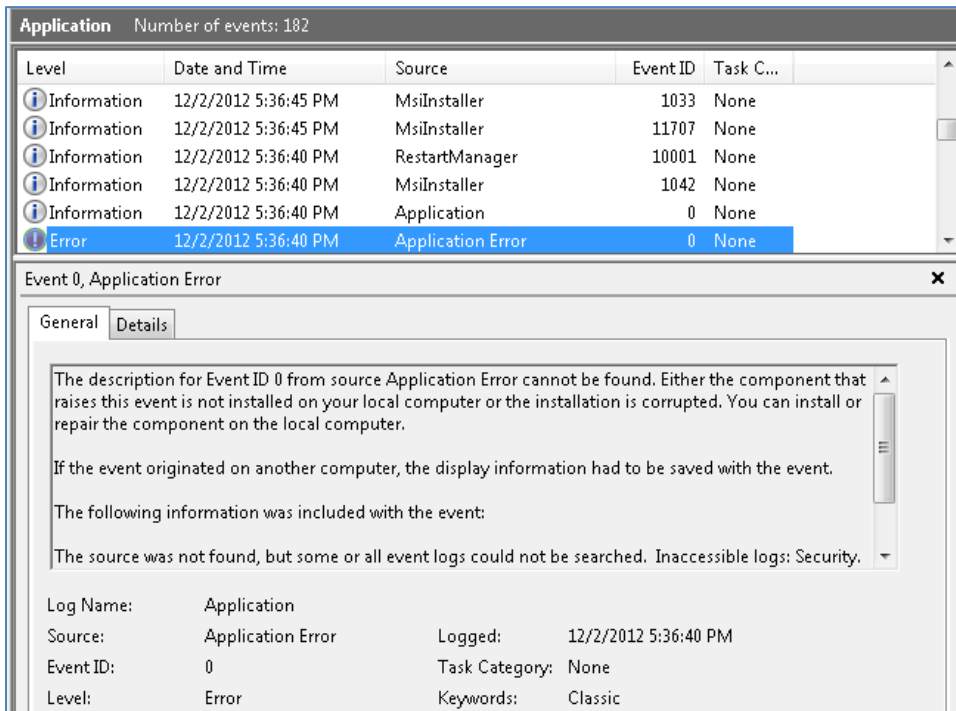
To resolve this issue, we have added code during the installation process that will add these event sources and allow event logging to take place. However, the installation is subject to the same security requirements. If the installation is not run with elevated privileges, then the event source creation will fail. In the case of event source creation failure, events will be logged to the Application Log, but will display a message similar to the one below:

The description for Event ID (0) in Source (Application) cannot be found. The local computer may not have the necessary registry information or message DLL files to display messages from a remote computer. You may be able to use the /AUXSOURCE= flag to retrieve this description; see Help and Support for details. The following information is part of the event:

<Normal BizNet Error Message>

Other workarounds such as disabling UAC to see event log information for BizNet Software are not recommended.

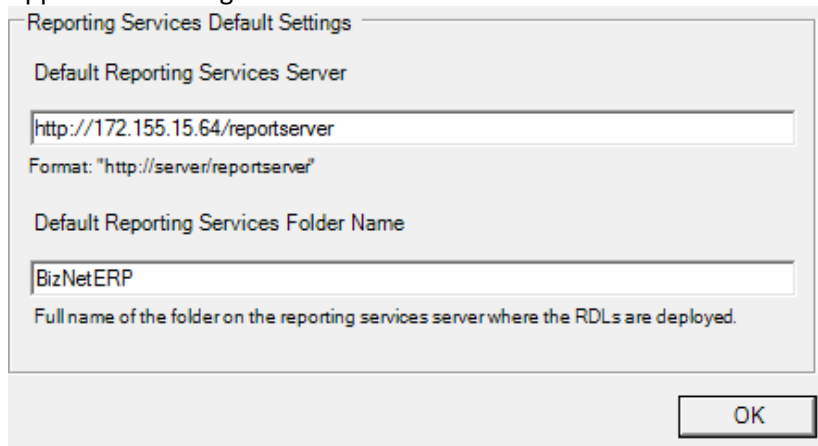
This problem does not affect Windows XP.



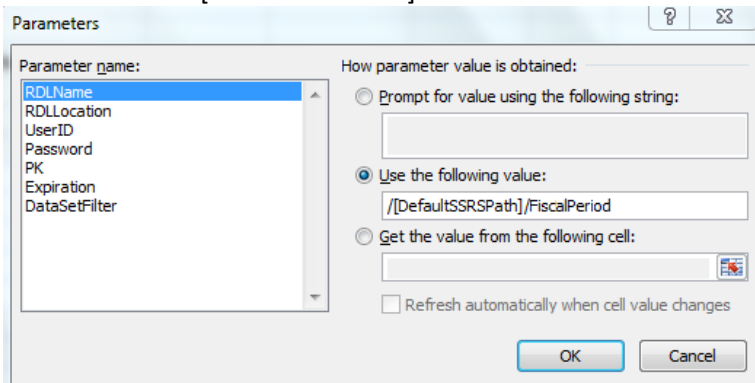
2.2.3. Default Reporting Services Server and Default Reporting Services Path

Global variables have been added to retrieve the default SSRS Server URL and the SSRS folder path. These variables are used to replace hard coding the server name or folder name in objects such as drill down targets, saved pivot layouts, and analysis set list parameters.

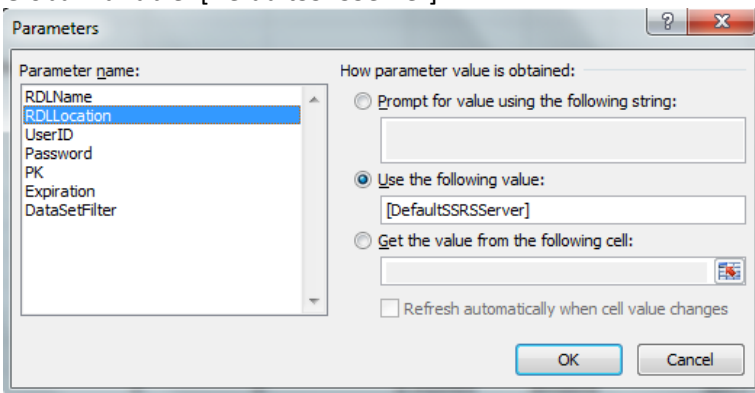
Application Setting view:



Global Variable: [DefaultSSRSPath]



Global Variable: [DefaultSSRServer]



2.2.4. Extended Drill-Down Support

Compatible formulas with drill-down capabilities

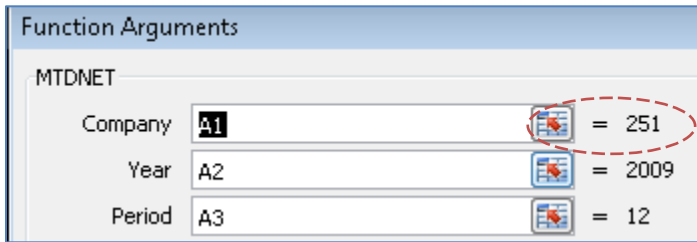
Drill-down on a single function with cell references	Ex: =MTDNET(\$B\$1,\$B\$2,\$B\$3,\$B\$4,\$B\$5,\$B\$6)
Drill-down on a single function with literals	Ex: =MTDNET(1001-CASH1,2013,1,PC1,STATC,INSIGHT)
Drill-down on a multi-value function with cell references	Ex: =MTDNET(\$B\$1,\$B\$2,\$B\$3,\$B\$4,B4:G4,\$B\$6)
Drill-down on a multi-value function with literals	Ex: =MTDNET(1001-CASH1,2013,1,[(Company IN ('PC1','PC2','PC3'))],STATC,INSIGHT)
Drill-down on a single function containing a formula in a parameter with cell references	Ex: =MTDNET(\$B\$1,CONCATENATE(\$E\$2,\$F\$2),\$B\$3,\$B\$4,\$B\$5,\$B\$6)
Drill-down on a single function containing a formula in a parameter with literals	Ex: =MTDNET(\$B\$1,CONCATENATE("20","13"),\$B\$3,\$B\$4,\$B\$5,\$B\$6)

3. BizInsight - Bug

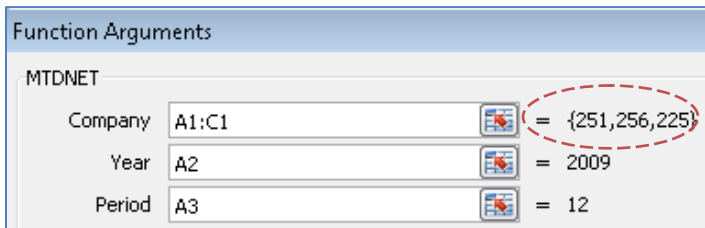
3.1.1. Resolve Single Values in Multiple Value Parameters

Parameters in functions and Analysis Sets can be customized to handle single values or multiple values. An error occurs when a single value is set in a multiple value parameter. A workaround solution was to provide additional codes in a multi-value parameter to process the single value. The new release resolves the issue and supports a single value passed in a multi-value parameter.

Function

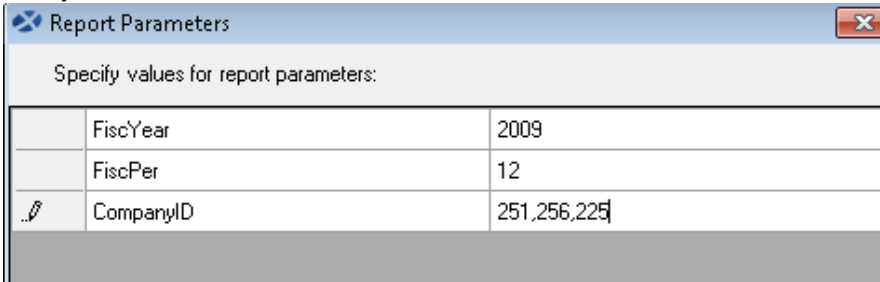


Function Arguments			
MTDNET			
Company	A1		= 251
Year	A2		= 2009
Period	A3		= 12



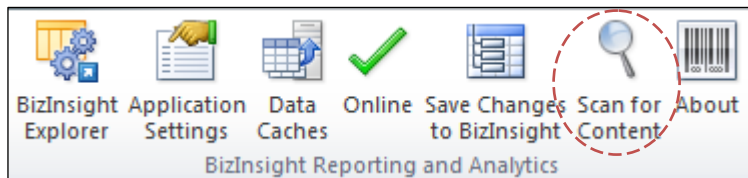
Function Arguments			
MTDNET			
Company	A1:C1		= {251,256,225}
Year	A2		= 2009
Period	A3		= 12

Analysis Set



Report Parameters		
Specify values for report parameters:		
	FiscYear	2009
	FiscPer	12
	CompanyID	251,256,225

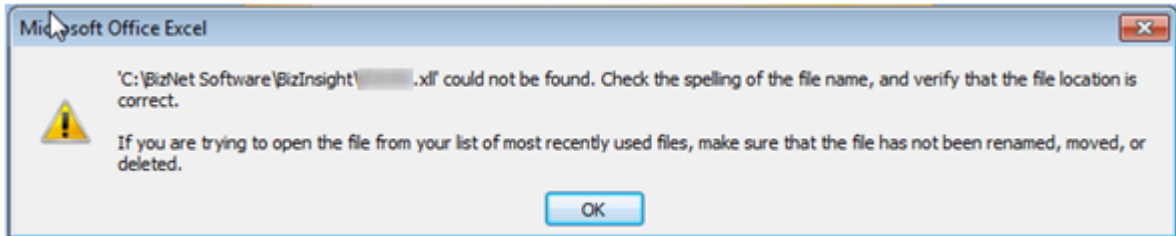
3.1.2. Scan for Content Process Contains File Remnants



The Scan for Content feature examines the configuration path setting then copies and registers XLL files for x86 and x64 Windows operating systems on Excel 2003, Excel 2007, or Excel 2010. The Scan for Content issue occurs when new content xll files or new content xll version files are introduced into the configuration path (under Application Settings) and the Scan for Content feature is utilized to update the content pack. The feature does not properly remove the

previous content xll files from the local user folder and registry. When BizInsight is loaded, the new content xll files would not be functional. Manual involvement would be required to import the new content xll files.

Scan for Content provides an automatic resolution by detecting new content xll files or new content xll version files introduced into the configuration path. The feature removes the previous content xll files from the local user's folder; however, the previous registry files are not updated and could result in a similar error message to the following:

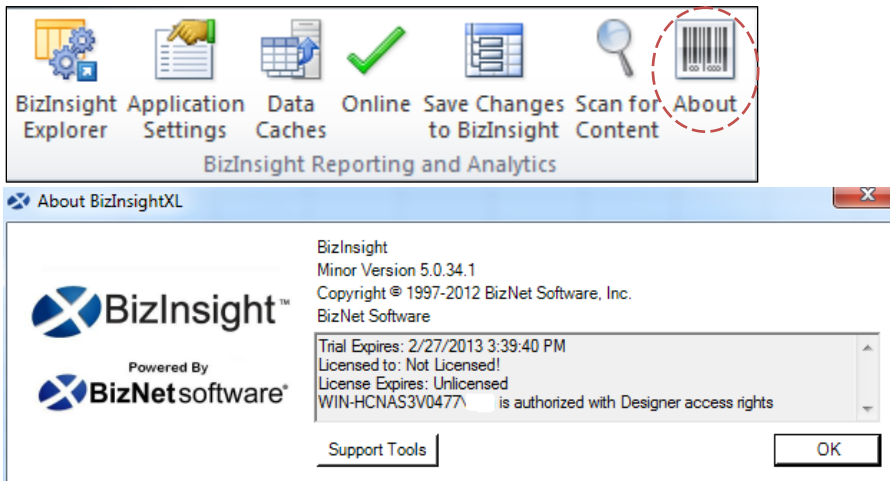


Should you receive this error, refer to the BizInsight 5.0 Common Errors document for steps to resolve.

The feature detects both 64-bit and 32-bit files in the configuration path and adds the correct version automatically. When BizInsight is loaded, the new content xll files are displayed and ready to be used.

3.1.3. BizInsight Trial and Licensing concerns

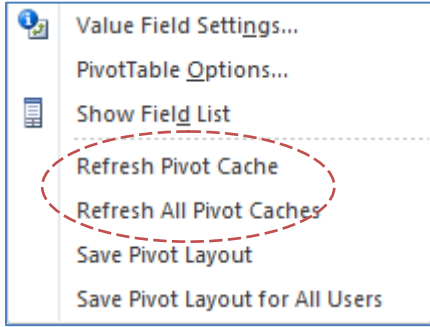
When trial enabled is false and the expiration date is not set, accessing the About dialog causes an error. The resolution displays the license expiration date instead of 1/1/1900.



3.1.4. Resolve Custom UI file issue on Excel 2007 when using Load on Demand feature

When installing BizInsight 5.0.34 on workstations that has previous BizInsight installations on them, the Scan for Content button would not be added to the BizInsight ribbon. To resolve this issue, the Microsoft file that stores the ribbon definition was supposed to be replaced. This version resolves issues where that file was not being replaced.

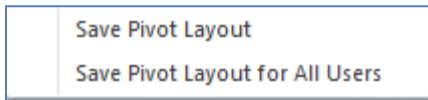
3.1.5. Remove Pivot Cache Refresh Buttons



The Refresh Pivot Cache and Refresh All Pivot Caches option is removed. The feature is not completed for production.

3.1.6. Pivot Table Hierarchy Fix

Users have the option to save pivot layouts in a hierarchical order in BizInsight. Local users can save their entire custom pivot layout in a workbook and persists for the user while previous All Users pivot layout exists. The order is based on SecurityUser and PropertyVersion in the Biz files. The pivot layout first prioritizes the SecurityUser column by Domain\User then All Users. PropertyVersion is prioritized next by /FolderName/RDLName/FunctionName then other combinations shown in the below chart:



*Save Pivot Layout for All Users is only available with a developer license.

Function or Drill-Down

Previous Priority Rank	New Priority Rank	SecurityUser	PropertyName	PropertyVersion
1	1	Domain\User	PivotLayout	RDLName/FunctionName
3	2	Domain\User	PivotLayout	/FolderName/RDLName/FunctionName
5	3	Domain\User	PivotLayout	RDLName
7	4	Domain\User	PivotLayout	/FolderName/RDLName
2	5	All	PivotLayout	RDLName/FunctionName
4	6	All	PivotLayout	/FolderName/RDLName/FunctionName
6	7	All	PivotLayout	RDLName
8	8	All	PivotLayout	/FolderName/RDLName

Analysis Sets

Previous Priority Rank	New Priority Rank	SecurityUser	PropertyName	PropertyVersion
1	1	Domain\User	PivotLayout	RDLName/Default
3	2	Domain\User	PivotLayout	/FolderName/RDLName/Default
2	3	All	PivotLayout	RDLName/Default
4	4	All	PivotLayout	/FolderName/RDLName/Default

3.1.7. XMLFAST Support in SQL Server 2000

The XMLFAST parameter was defined as nvarchar(max), however, a max datatype is an invalid length in SQL Server 2000. The length has been changed and defined as nvarchar(4000).

3.1.8. Refreshing Analysis Set Containing Multi-Value Parameters

Resolved the issue of refreshing analysis sets lists (dynamic lists) throwing an exception on multi-value RDLs.

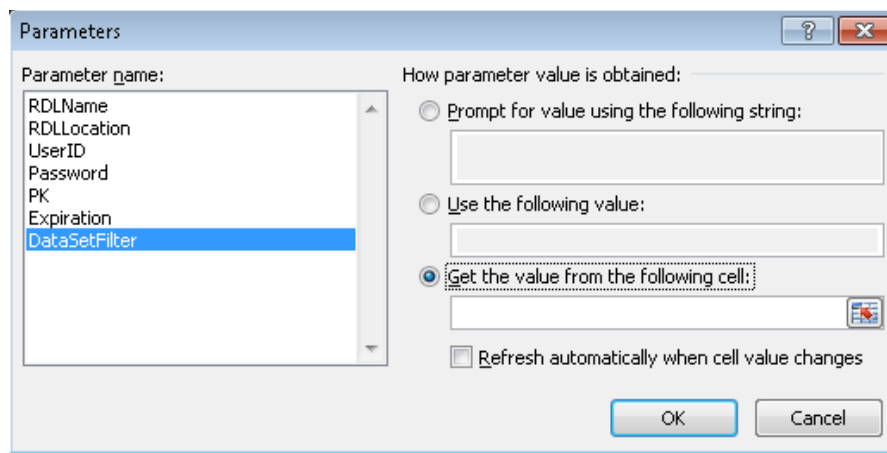
4. BizInsight - Known Issues

1. Dynamic List Limitations

Although the 255 character limitation has been resolved for drilldown, the DataSetFilter property of the analysis set remains limited to 255 characters. This is because the property is an Excel object and is not accessible. To work around this limitation, BizInsight 5.0.34.1 includes a new configuration setting named "ShowLargeFilters" in the app.config file (located in the BizInsight bin5 folder).

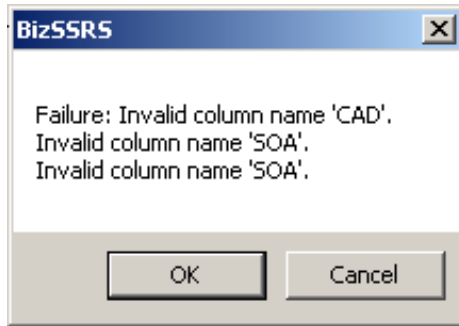
```
<setting name="ShowLargeFilters" serializeAs="string">  
<value>False</value>
```

When this setting is changed to "True", BizInsight will place the criteria string in the cell directly above the analysis set. The DataSetFilter property of the analysis set can then be re-directed to retrieve its value from that cell. One risk to this approach exists. When binding a parameter in a list to a cell, memory corruption issues can occur later during Broadcast distributions.



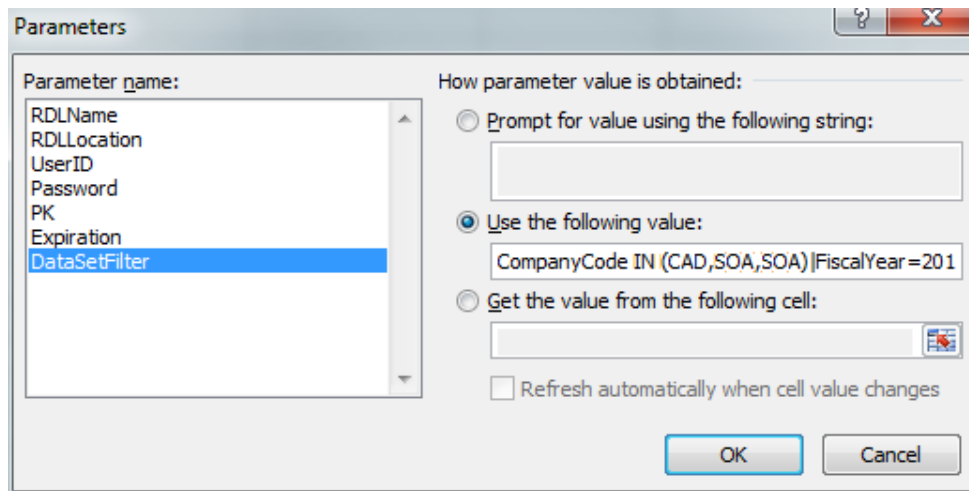
In addition, when creating dynamic lists, multiple value server side parameters must use the IN operator exclusively. Ex: Segment1 IN('100', '110', '150').

2. BizProperty can only store up to 255 characters in a cell due to the character limitation in the biz file.
3. The 255 character length drill-down expansion feature is not supported in Microsoft Office 2003. The function is limited to 255 characters due to Excel 2003 architectural design. Drill-down will continue to work. A workaround to this issue is to update to Microsoft 2007 or 2010.
4. The following error will occur when a user attempts to refresh an existing drill-down list that was created by drilling down on a function with a multi-value parameter:



Two workarounds exist for this issue:

- Alter the parameter setting and change the DataSetFilter operator from the equal (“=”) to an “IN” operator.



- Add the equivalent analysis set to the workbook.

5. Appendix

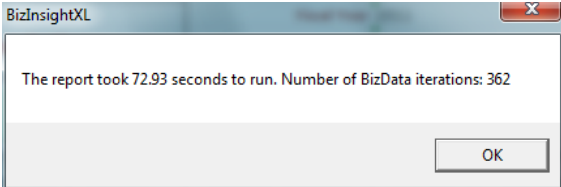
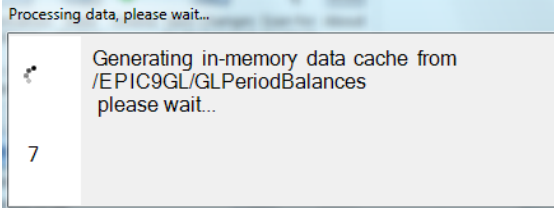
5.1. App.config and User.config Location Path

- App.config – (install directory)\BizInsight\bin5
- User.config – This path will vary by Excel version, installation path, and Workstation. An example location is %USERPROFILE%\AppData\Local\Microsoft_Corporation\C__BizNet_Software_BizIns_Path_j5krx0ue5irs5to1ixyogavtiegg1nmn\12.0.xxxx.xxxx

5.2. App.config “User Settings” List

XML Element Name	Description	UI Equivalent	Script
PlugInPath	Future planned functionality.	N/A	<code><setting name="PlugInPath" serializeAs="String"> <value /></code>
BizInsightMenuConnectionString	Connection string to connect to a database instead of the BizInsight.biz file	BizInsight Administration Button > MySettings - BizInsightMenuConnection String	<code><setting name="BizInsightMenuConnectionString" serializeAs="String"> <value /></code>
BizInsightMenuReports1	Not in use	N/A	<code><setting name="BizInsightMenuReports1" serializeAs="String"> <value /></code>
VerboseLogging	Allows all events to be logged in the event log. Recommended to be turned off unless troubleshooting. Default value to False.	BizInsight Administration Button > MySettings - VerboseLogging	<code><setting name="VerboseLogging" serializeAs="String"> <value>False</value></code>
BizInsightDataDBConnectionString	Connection string to connect to a database instead of the BizInsightDB.biz file.	BizInsight Administration Button > MySettings - BizInsightDataDBConnection String	<code><setting name="BizInsightDataDBConnectionString" serializeAs="String"> <value /></code>

XML Element Name	Description	UI Equivalent	Script
BizInsightDataDBHistoryConnectionString	Not in use	N/A	<setting name="BizInsightDataDBHistoryConnectionString" serializeAs="String"> <value />
DefaultSSRSLocation	Location to the default reporting services server.	Ribbon Button: Application Settings > Reporting Services Default Settings - Default Reporting Services Server or BizInsight Administration Button > MyDataSettings - DefaultSSRSLocation	<setting name="DefaultSSRSLocation" serializeAs="String"> <value>http://servername/reportserver</value>
DefaultSSRSPath	Location to the default reporting services directory.	Ribbon Button: Application Settings > Reporting Services Default Settings - Default Reporting Services Folder Name or BizInsight Administration Button > MyDataSettings - DefaultSSRSPath	<setting name="DefaultSSRSPath" serializeAs="String"> <value>Folder Name</value>
Offline	Disables BizInsight from connecting to a database server. Excellent option to use during report creation or designing.	Ribbon Button	<setting name="Offline" serializeAs="String"> <value>False</value>
UpdateUserSettings	Programming trick to allow user.config settings to be updated when windows updates for Office are applied, specifically Excel.exe. Default value is True.	N/A	<setting name="UpdateUserSettings" serializeAs="String"> <value>True</value>
OptimizeCache	Option for performance testing. If set to False, reports could be perform slowly. Default value is True.	N/A	<setting name="OptimizeCache" serializeAs="String"> <value>True</value>

XML Element Name	Description	UI Equivalent	Script
EAS5_5	Default value should be False for all content packs except Sungard EAS content. Value False disables EAS drill-downs and ribbon buttons.	N/A	<pre><setting name="EAS5_5" serializeAs="String"> <value>False</value></pre>
FormulaEditorPopUp	Optional setting to display function information during Excel calculations. When enabled, the Formula Editor will display on drag and drop of a function to allow configuration of parameters. Disabled by default on Windows XP because of compatibility issues. Works on Vista and Windows 7.	Ribbon Button: Application Settings - Enable Formula Editor Pop Up	<pre><setting name="FormulaEditorPopUp" serializeAs="String"> <value>True</value></pre>
SQLAuthenticationPrompt	Persist SQL Credentials for duration of the session	Ribbon Button: Application Settings - Persist SQL Authentication (Session Only)	<pre><setting name="SQLAuthenticationPrompt" serializeAs="String"> <value>False</value></pre>
RefreshTimer	Optional setting to enable or disable refresh timer pop-up on BizData call/iterations. 	Ribbon Button: Application Settings - Enable Refresh Timer	<pre><setting name="RefreshTimer" serializeAs="String"> <value>True</value></pre>
CachingWindow	Optional setting to enable or disable background worker thread pop-up. 	Ribbon Button: Application Settings - Enable Cache Information Dialog	<pre><setting name="CachingWindow" serializeAs="String"> <value>True</value></pre>

XML Element Name	Description	UI Equivalent	Script
ContentPathOverride	Option provides the ability to change the local directory to which the BizInsight files are copied.	Ribbon Button: Application Settings > Local Content Path - Enable Override	<code><setting name="ContentPathOverride" serializeAs="String"> <value>False</value></code>
ContentPath	Location of BizInsight Excel add-in files. Not used when Override option is set to False and uses default location users\My Documents directory.	Ribbon Button: Application Settings > Local Content Path - Enable Override then Local Content Path	<code><setting name="ContentPath" serializeAs="String"> <value /></code>
XMLFAST	Option for fast, low footprint rendering format that creates in-memory caches by using reporting services as a metadata store only and not an execution engine. Default value is True.	Ribbon Button: Application Settings - Enable XMLFAST	<code><setting name="XMLFAST" serializeAs="String"> <value>True</value></code>
CacheExpiration	Client cache expiration after a specific date. BizNet Refresh removes the caches so adjusting this setting is unnecessary. Select the Offline ribbon button and use Excel Refresh option for an extended period of time. Default value set to 40,000 minutes.	N/A	<code><setting name="CacheExpiration" serializeAs="String"> <value>40000</value></code>
TrialEnabled	Enable or disable all users from using a trial period of BizInsight. Highly suggested for Terminal Services implementation. Does not work on Sungard EAS products.	N/A	<code><setting name="TrialEnabled" serializeAs="String"> <value>True</value></code>
CalcMode	Options that allow greater control over Excel's calculation behavior by refreshing all functions. The default option is Calculate Full unless the report is not refreshing all functions. Calculate Full Rebuild will cause Excel to rebuild the dependency tree before recalculating functions.	Ribbon Button: Application Settings > Calculation Settings	<code><setting name="CalcMode" serializeAs="String"> <value>CalcFull</value></code>

XML Element Name	Description	UI Equivalent	Script
ObjectRefresh	Option allows a user to control whether BizInsight analysis set lists contained in a report are refreshed when BizInsight performs a refresh. Valid options are AnalysisSetListsAndPivots, AnalysisSetLists, and AnalysisSetPivotsOnly. Default value is 'AnalysisSetListsOnly'.	Ribbon Button: Application Settings > Calculation Settings	<code><setting name="ObjectRefresh" serializeAs="String"> <value>AnalysisSetListsOnly</value></code>
EventSources	Used during the installation stage of the product. Default setting is set to "True" and automatically set to "False" if event log cannot be written. The application log is updated when the value is set to "False".	N/A	<code><setting name="EventSources" serializeAs="String"> <value>True</value></code>
ShowLargeFilters	Display drill-down list when parameters more than 255 characters in length. Default set to "False". To enable, set value to "True".	N/A	<code><setting name="ShowLargeFilters" serializeAs="String"> <value>False</value></code>
BizInsightMenuDB	Location to the BizInsight.biz file.	Ribbon Button: Application Settings - Configuration Path or BizInsight Administration Button > MySettings - BizInsightMenuDB	<code><setting name="BizInsightMenuDB" serializeAs="String"> <value>C:\folder name\BizInsight.biz</value></code>
BizInsightDataDB	Location to the BizInsightDB.biz file.	Application Settings Button: Configuration Path or BizInsight Administration Button > MySettings - BizInsightDataDB	<code><setting name="BizInsightDataDB" serializeAs="String"> <value>C:\folder name\BizInsightDB.biz</value></code>
BizInsightDataDBHistory	Not in use	N/A	<code><setting name="BizInsightDataDBHistory" serializeAs="String"> <value>C:\folder name\BizInsightDB.biz</value></code>

XML Element Name	Description	UI Equivalent	Script
ConfigPathV4	Location of the BizFunctions.xml for V4 Compatibility and set by the Configuration Path in the UI.	Ribbon Button: Application Settings Button - Configuration Path	<setting name="ConfigPathV4" serializeAs="String"> <value>C:\foldername\</value>
AdminPath	Location of BizInsight license and .users files.	Ribbon Button: Application Settings - Administration Path or BizInsight Administration Button > MySettings - AdministrationPath	<setting name="AdminPath" serializeAs="String"> <value>C:\foldername\</value>
ERP	Valid values are BizNet or Epicor. One-time update only. Must re-register the add-in to get the branding to rebuild.	N/A	<setting name="ERP" serializeAs="String"> <value>Epicor</value>